

Instructional Guidelines for the SNS® Purlin Strut System

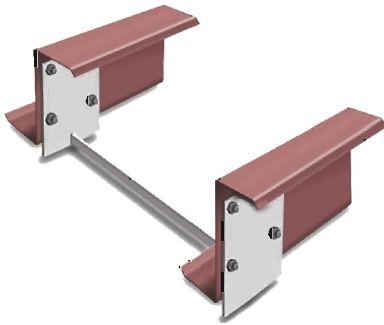
Screwdown Roof

The SNS® Purlin Strut System is designed to resist Purlin Rotation that happen when thermal blocks are placed over the top of the purlins, in a Screw-down Roof. The four available options are:

Option #1 Universal Strut System is designed to be adjustable, to fit purlin spacing.

Option #2 Fix Purlin Strut System is designed to brace specific purlin spacing.

Option #3 Concealed Fix Purlin Strut System is designed to brace specific purlin spacing in the bottom of the purlin cavity, this allows it to be concealed by a liner system.



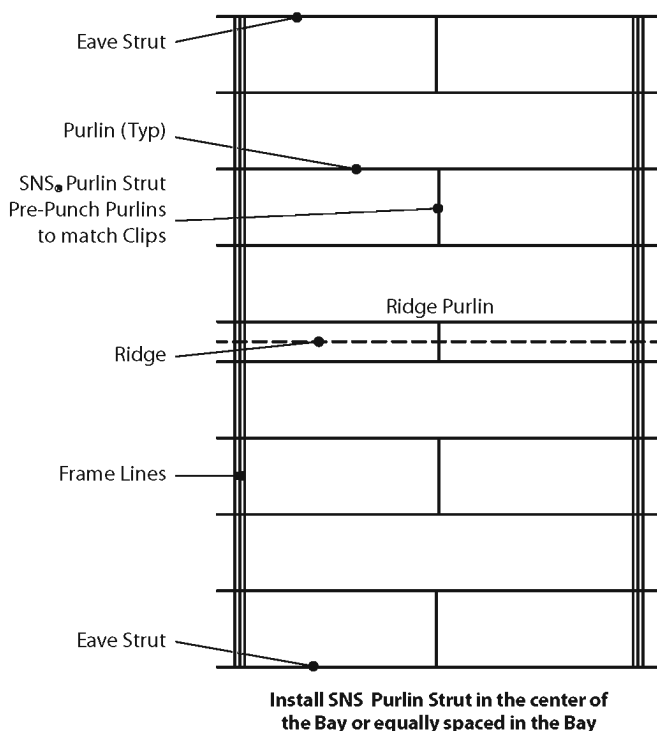
The SNS® Purlin Strut System is designed to resist Purlin Rotation. (Illustration of the Fix Purlin Strut System, Patent Pending)

To install the SNS® Purlin Struts, all holes are to be pre-punched in the purlins by the manufacturer to insure accuracy and quick installation. To install the purlin clips to each purlin, two bolts are placed in the bottom holes and one bolt in the top hole of each purlin clip and each purlin.

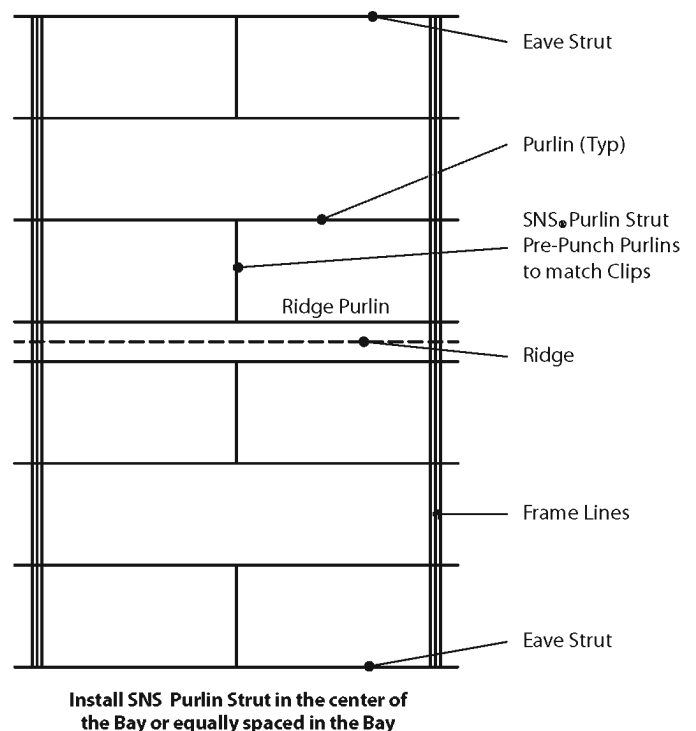
SNS® Purlin Struts are designed to allow expansion and contraction in the roof. The Clip over the supporting frame also needs to allow for expansion and contraction. The height of that clip needs to be 70% of the purlin height. The SNS® Purlin Struts are to be placed in every other purlin row to allow for expansion and contraction of the roof deck. Do not install this product in every purlin space. (see illustration below)

Test conducted indicates one SNS Purlin Strut being installed in a 33' bay for a Screw-down Roof. All Design Criteria needs to be evaluated by the Project Engineer. (see www.sealednsafe.com/testResults for more information)

Odd Number of Purlins Rows for each slope of the building

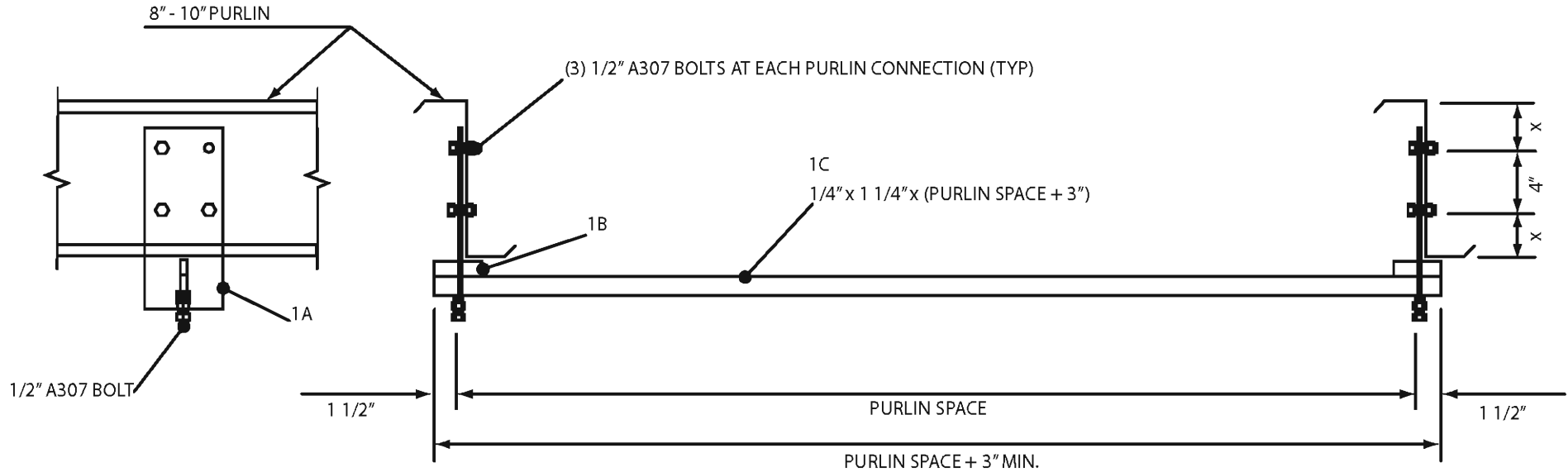


Even Number of Purlins Rows for each slope of the building



Sealed "N" Safe® Purlin Strut System

OPTION 1 - UNIVERSAL STRUT SYSTEM (ADJUSTABLE)

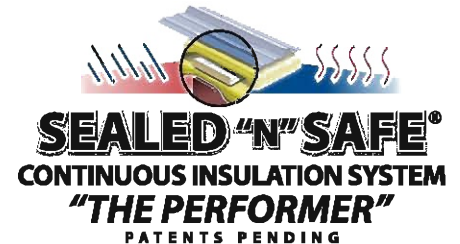


This Drawing is
Property of Sealed "N" Safe® Products LLC
 Patent Pending

Use of this information is granted for use at no charge only with the
Sealed "N" Safe® Continuous Insulation System
 Which includes use of the SNS Thermal Block
 Use otherwise is strictly forbidden

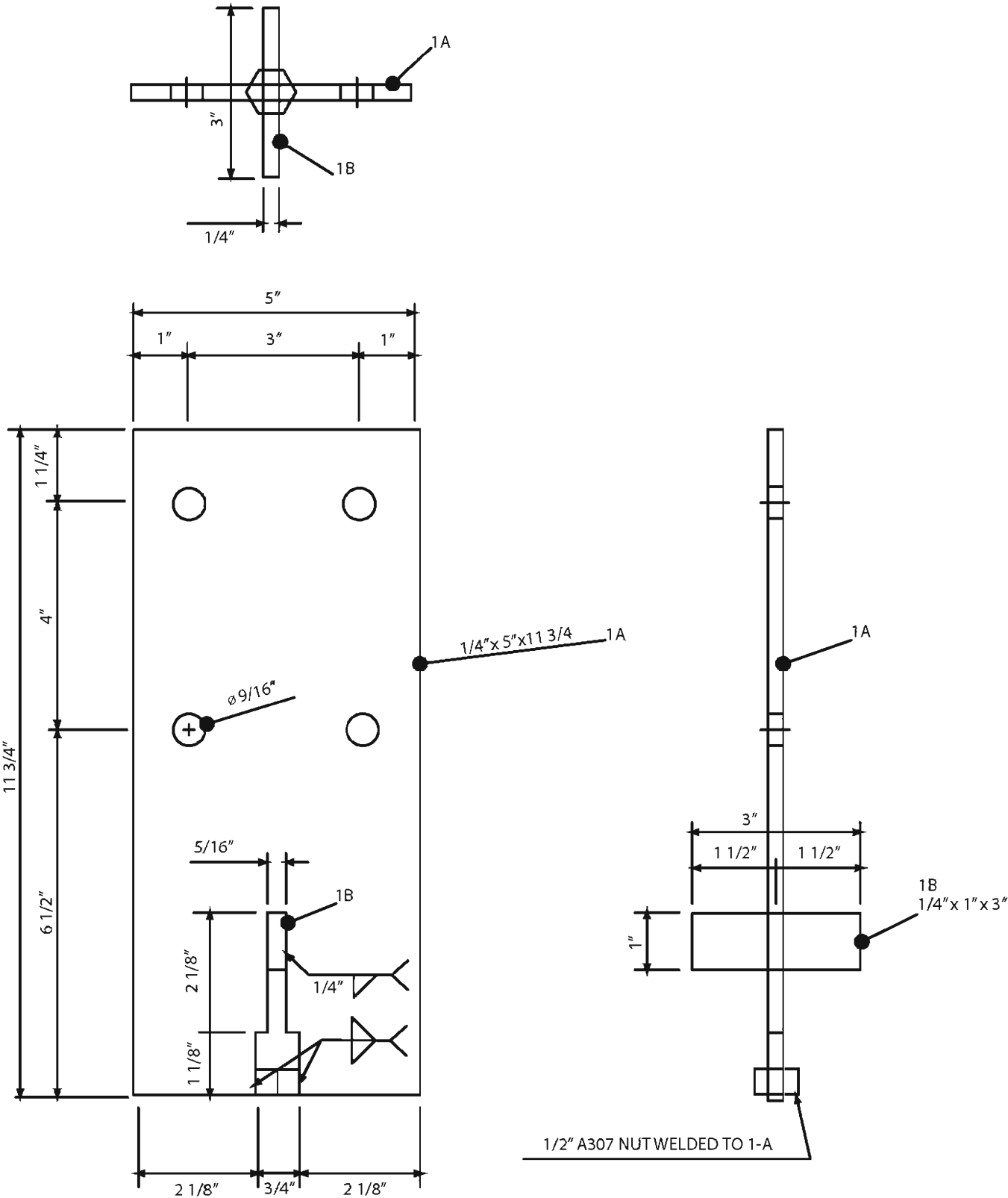
NOTES:

1. ALL MATERIAL IS DESIGNED WITH A36 YIELD MINIMUM.
2. ALL BOLTS ARE TO BE 1/2" A307.
3. INSTALL PURLIN CLIP TO PURLIN WITH (2) BOLTS IN BOTH BOTTOM HOLES AND (1) BOLT IN TOP HOLES.
4. INSURE THAT 1C IS STRAIGHT BEFORE, DURING, AND AFTER INSTALLATION. SLIDE 1C INTO PURLIN CLIP AND TIGHTEN BOLT TO HOLD IN PLACE. 1C NEEDS TO BE LONG ENOUGH TO EXTEND FLUCH OR BEYOND 1B.



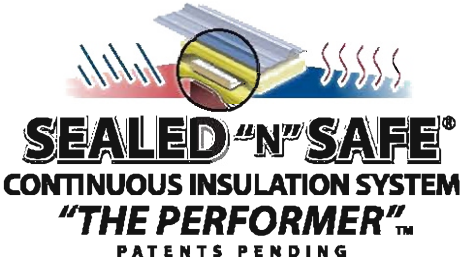
Sealed "N" Safe® Purlin Strut System

OPTION 1 - UNIVERSAL STRUT SYSTEM
ADJUSTABLE, PURLIN CLIP ASSEMBLY



This Drawing is
Property of Sealed "N" Safe® Products LLC
Patent Pending

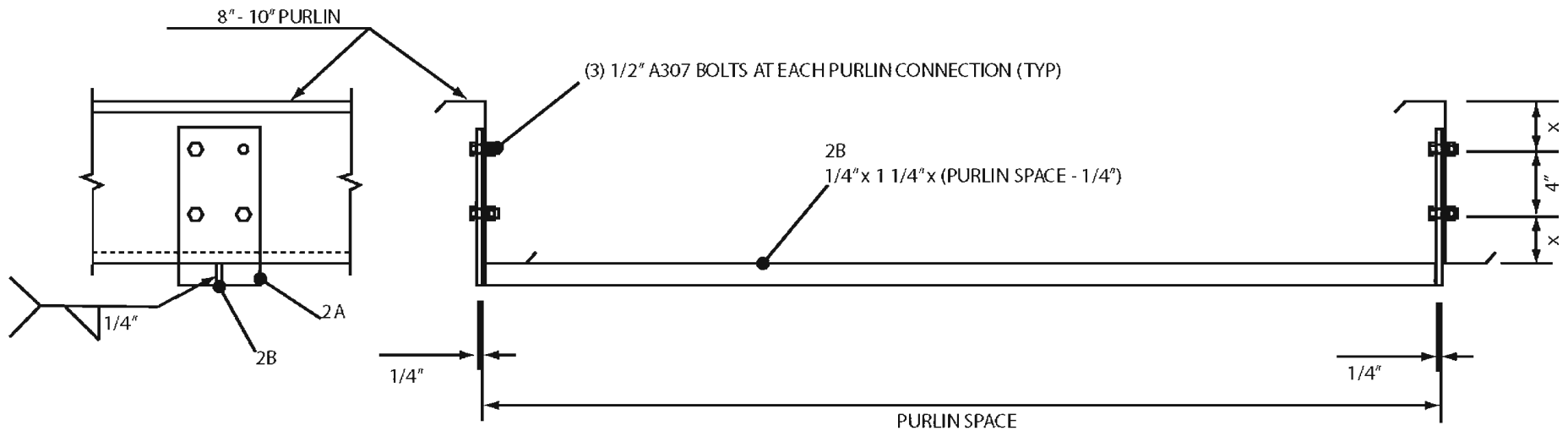
Use of this information is granted for use at no charge only with the
Sealed "N" Safe® Continuous Insulation System
Which includes use of the SNS Thermal Block
Use otherwise is strictly forbidden



Sealed "N" Safe® Purlin Strut System

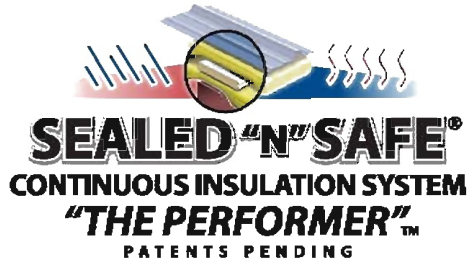
OPTION 2 - FIX PURLIN STRUT SYSTEM

BUILD TO FIT PURLIN SPACE



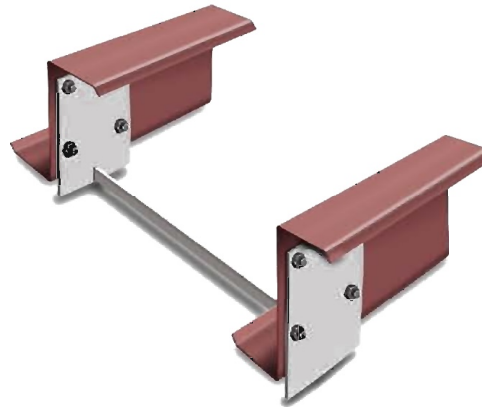
NOTES:

1. ALL MATERIAL IS DESIGNED WITH A36 YIELD MINIMUM.
2. ALL BOLTS ARE TO BE 1/2" A307.
3. INSTALL PURLIN CLIP TO PURLIN WITH (2) BOLTS IN BOTH BOTTOM HOLES AND (1) BOLT IN TOP HOLES.
4. INSURE THAT 2B IS STRAIGHT BEFORE, DURING, AND AFTER INSTALLATION.

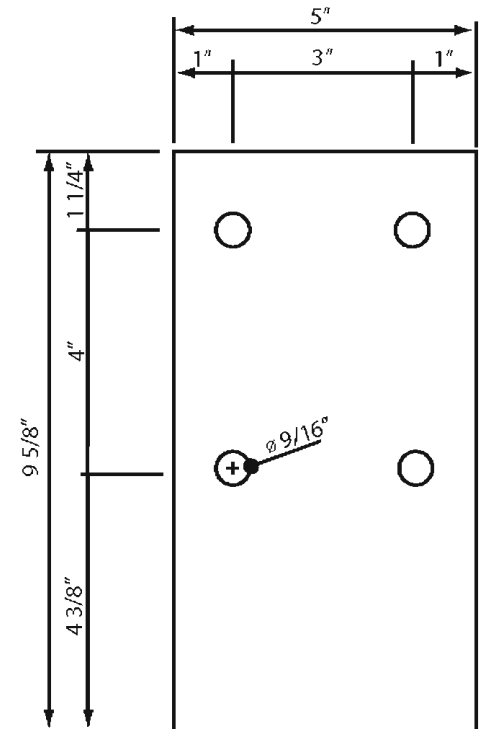


This Drawing is
Property of Sealed "N" Safe® Products LLC
 Patent Pending

Use of this information is granted for use at no charge only with the
Sealed "N" Safe® Continuous Insulation System
 Which includes use of the SNS Thermal Block
 Use otherwise is strictly forbidden



*The SNS® Purlin Strut System is
 designed to resist Purlin Rotation.
 (Illustration of the Fix Purlin Strut
 System, Patent Pending)*

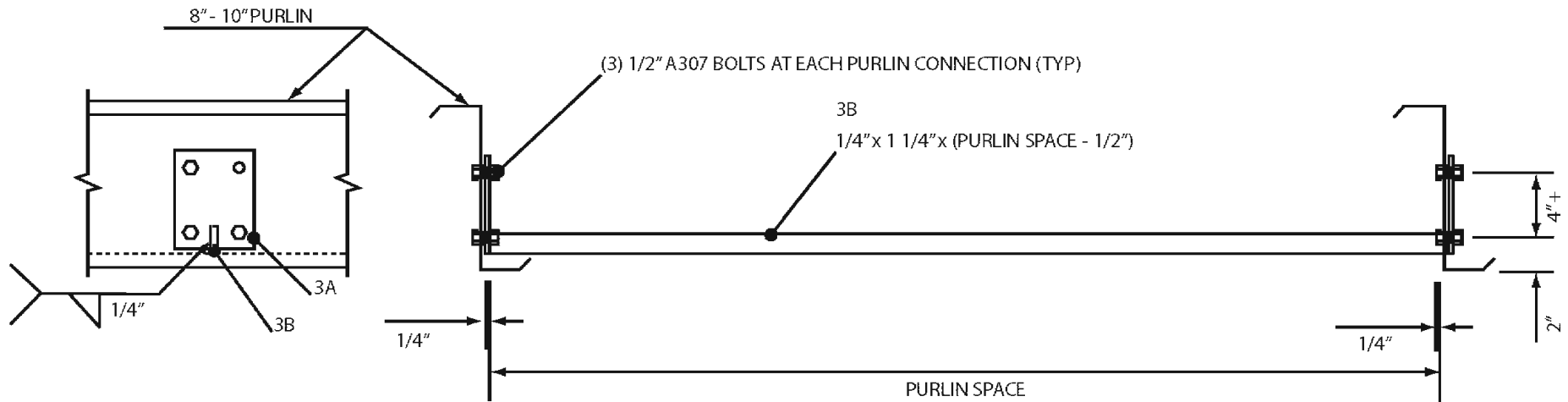


2A CLIP LAYOUT 1/4" x 5" x 9 5/8"

Sealed "N" Safe® Purlin Strut System

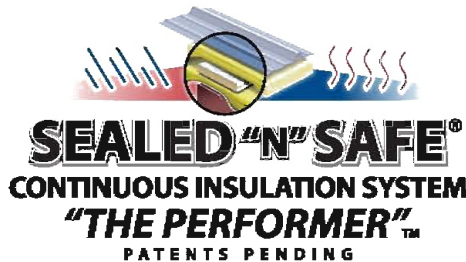
OPTION 3 - CONCEALED FIX PURLIN STRUT SYSTEM

BUILD TO FIT PURLIN SPACE



NOTES:

1. ALL MATERIAL IS DESIGNED WITH A36 YIELD MINIMUM.
2. ALL BOLTS ARE TO BE 1/2" A307.
3. INSTALL PURLIN CLIP TO PURLIN WITH (2) BOLTS IN BOTH BOTTOM HOLES AND (1) BOLT IN TOP HOLES.
4. INSURE THAT 3B IS STRAIGHT BEFORE, DURING, AND AFTER INSTALLATION.



This Drawing is

Property of Sealed "N" Safe® Products LLC

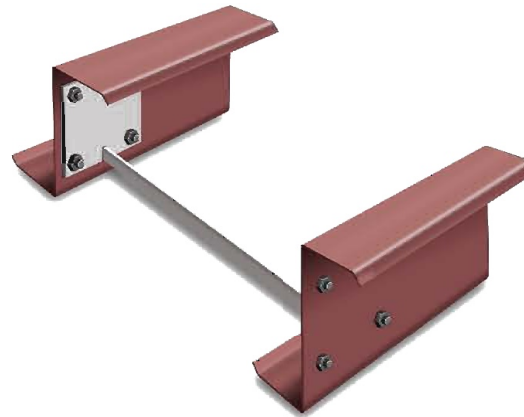
Patent Pending

Use of this information is granted for use at no charge only with the

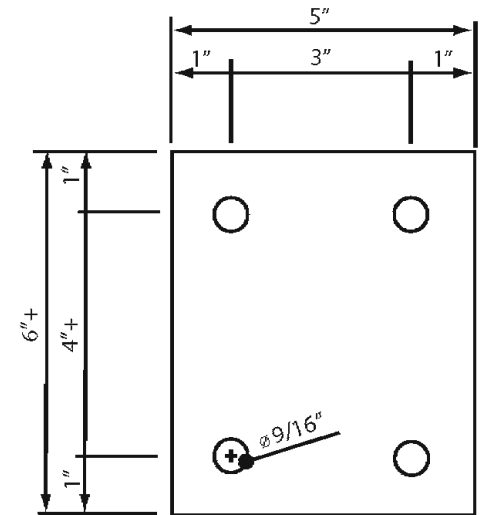
Sealed "N" Safe® Continuous Insulation System

Which includes use of the SNS Thermal Block

Use otherwise is strictly forbidden



*The SNS® Purlin Strut System is designed to resist Purlin Rotation.
(Illustration of the Concealed Fix Purlin Strut System, Patent Pending)*



3A CLIP LAYOUT 1/4" x 5" x 6"