

Instructional Guidelines for the SNS® Purlin Strut System

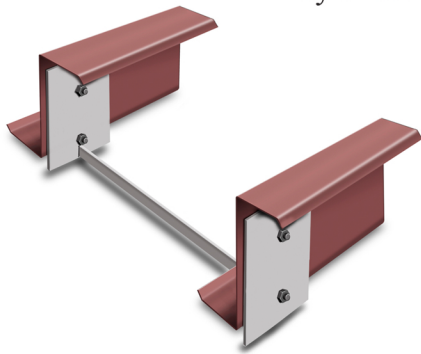
Screwdown Roof

The SNS **Purlin Strut System** is designed to resist Purlin Rotation that happen when thermal spacers are placed over the top of the purlins, in a Screw-down Roof. The three available options are:

Option #1 Universal Strut System is designed to be adjustable, to fit purlin spacing.

Option #2 Fix Purlin Strut System is designed to brace specific purlin spacing.

Option #3 Concealed Fix Purlin Strut System is designed to brace specific purlin spacing in the bottom of the purlin cavity, this allows it to be concealed by a liner system.



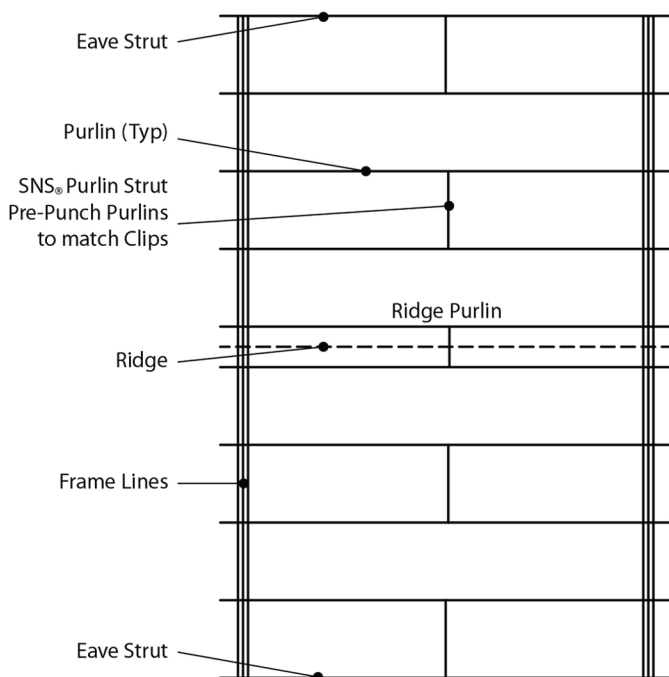
The SNS® Purlin Strut System is designed to resist Purlin Rotation. (Illustration of the Fix Purlin Strut System, Patent Pending)

To install the SNS® Purlin Struts, all holes are to be pre-punched in the purlins by the manufacturer to insure accuracy and quick installation. To install the purlin clips to each purlin, bolt each purlin clip to the purlin.

SNS® Purlin Struts are designed to allow expansion and contraction in the roof. The Clip over the supporting frame also needs to allow for expansion and contraction. The height of that clip needs to be 70% of the purlin height. The SNS® Purlin Struts are to be placed in every other purlin row to allow for expansion and contraction of the roof deck. Do not install this product in every purlin space. (see illustration below)

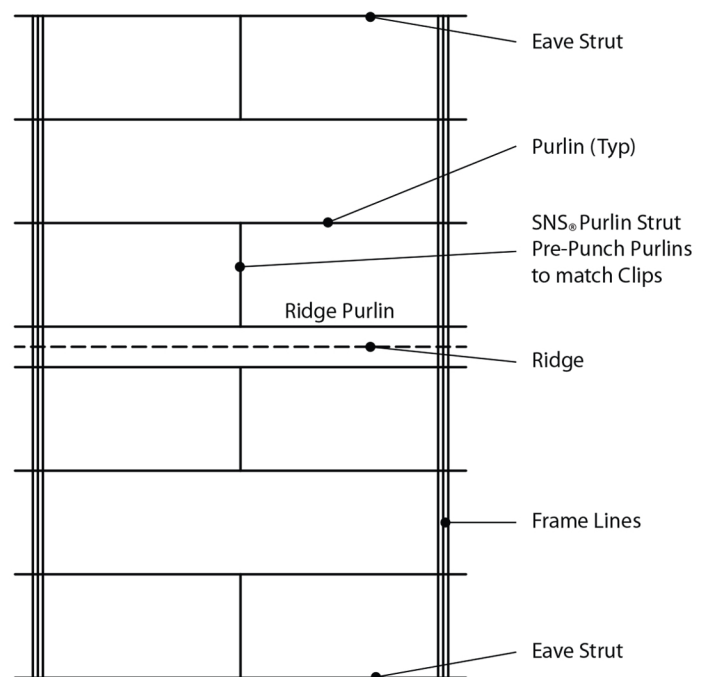
Test conducted indicates one SNS® Purlin Strut being installed in a 33' bay for a Screw-down Roof. All Design Criteria needs to be evaluated by the Project Engineer. (see www.sealednsafe.com/testResults for more information)

Odd Number of Purlins Rows for each slope of the building



Install SNS Purlin Strut in the center of the Bay or equally spaced in the Bay

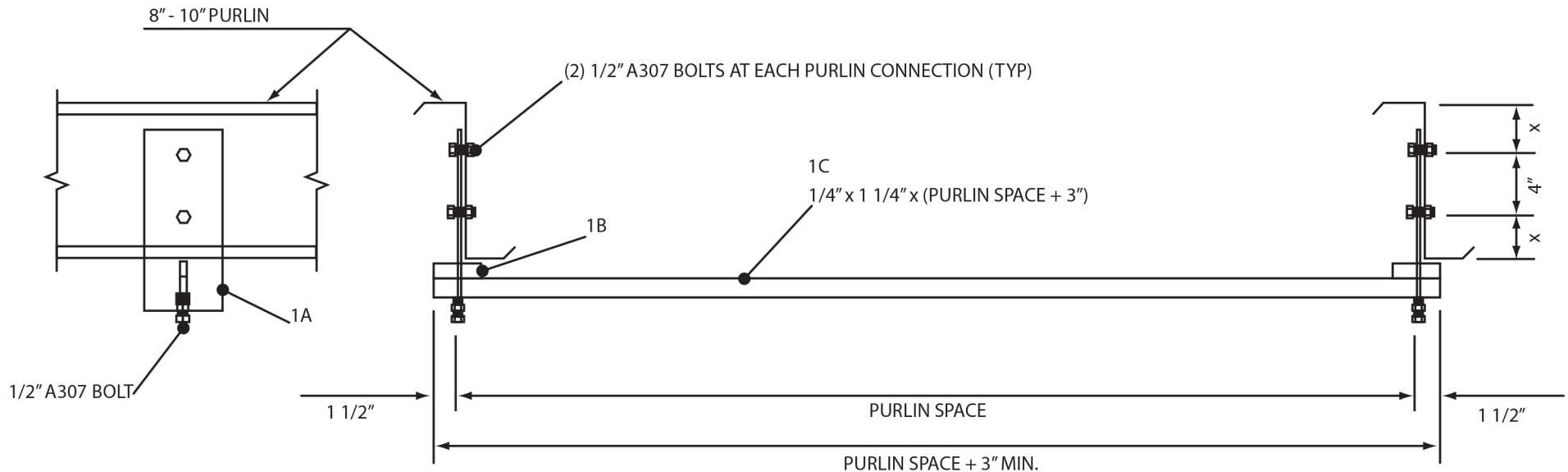
Even Number of Purlins Rows for each slope of the building



Install SNS Purlin Strut in the center of the Bay or equally spaced in the Bay

Sealed "N" Safe® Purlin Strut System

OPTION 1 - UNIVERSAL STRUT SYSTEM (ADJUSTABLE)

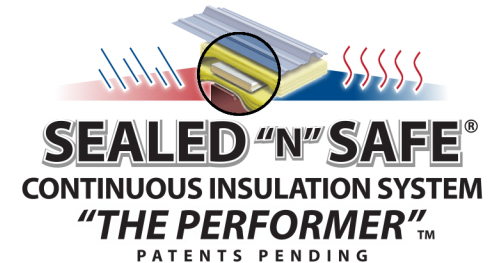


This Drawing is
Property of Sealed "N" Safe® Products LLC
 Patent Pending

Use of this information is granted for use at no charge only with the
Sealed "N" Safe® Continuous Insulation System
 Which includes use of the SNS Thermal Spacer
 Use otherwise is strictly forbidden

NOTES:

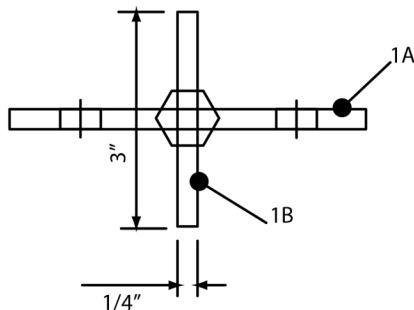
1. ALL MATERIAL IS DESIGNED WITH A36 YIELD MINIMUM.
2. ALL BOLTS ARE TO BE 1/2" A307.
3. INSTALL PURLIN CLIP TO PURLIN
4. INSURE THAT 1C IS STRAIGHT BEFORE, DURING, AND AFTER INSTALLATION. SLIDE 1C INTO PURLIN CLIP AND TIGHTEN BOLT TO HOLD IN PLACE. 1C NEEDS TO BE LONG ENOUGH TO EXTEND FLUCH OR BEYOND 1B.



Sealed "N" Safe® Purlin Strut System

OPTION 1 - UNIVERSAL STRUT SYSTEM

ADJUSTABLE, PURLIN CLIP ASSEMBLY

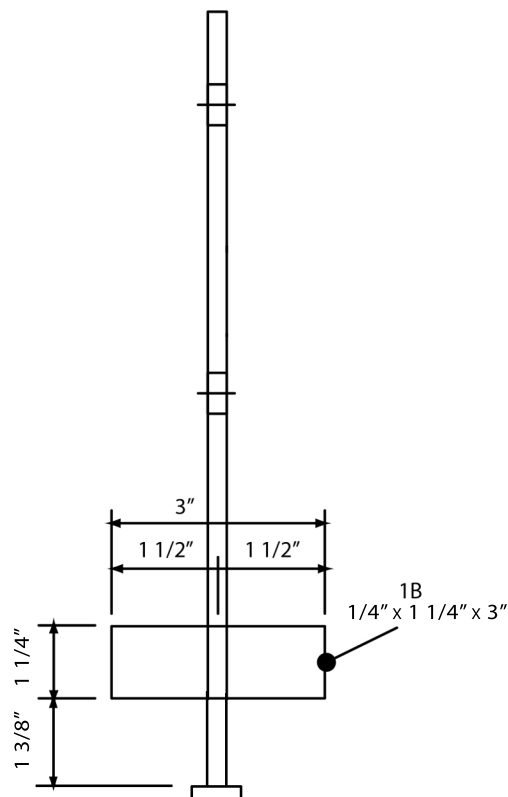
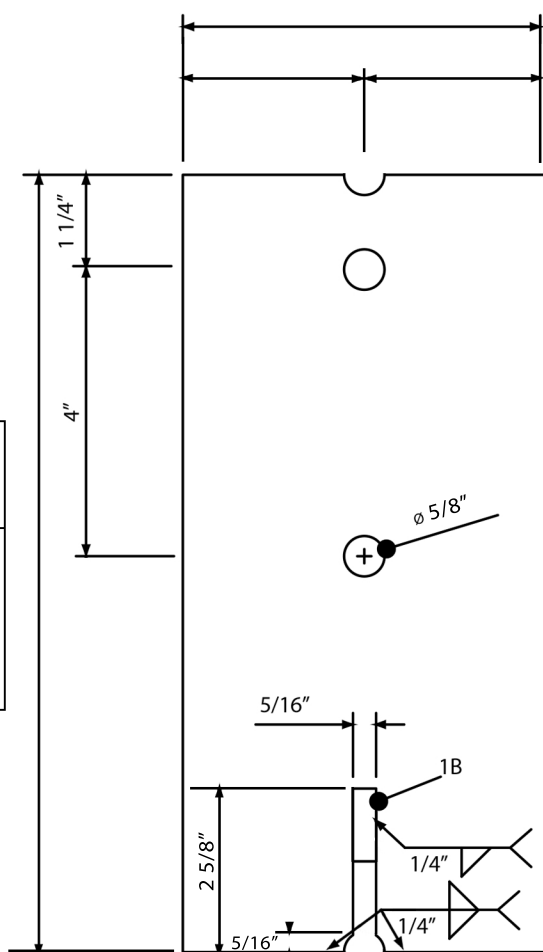


CLIP SIZING CHART

THICK	WIDTH
1/4"	5"
5/16"	3 1/2"
3/8"	2 1/2"

LENGTH CHART

PURLIN SIZE	LENGTH
8"	9 7/8"
9"	10 7/8"
10"	11 7/8"



ELONGATED NUT WELDED TO 1-A

This Drawing is

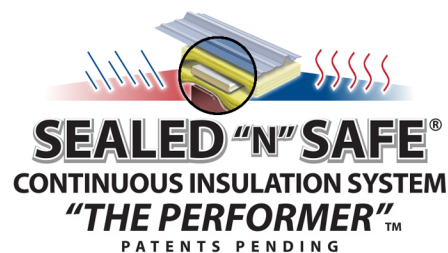
Property of Sealed "N" Safe® Products LLC Patent Pending

Use of this information is granted for use at no charge only with the

Sealed "N" Safe® Continuous Insulation System

Which includes use of the SNS® Thermal Spacer

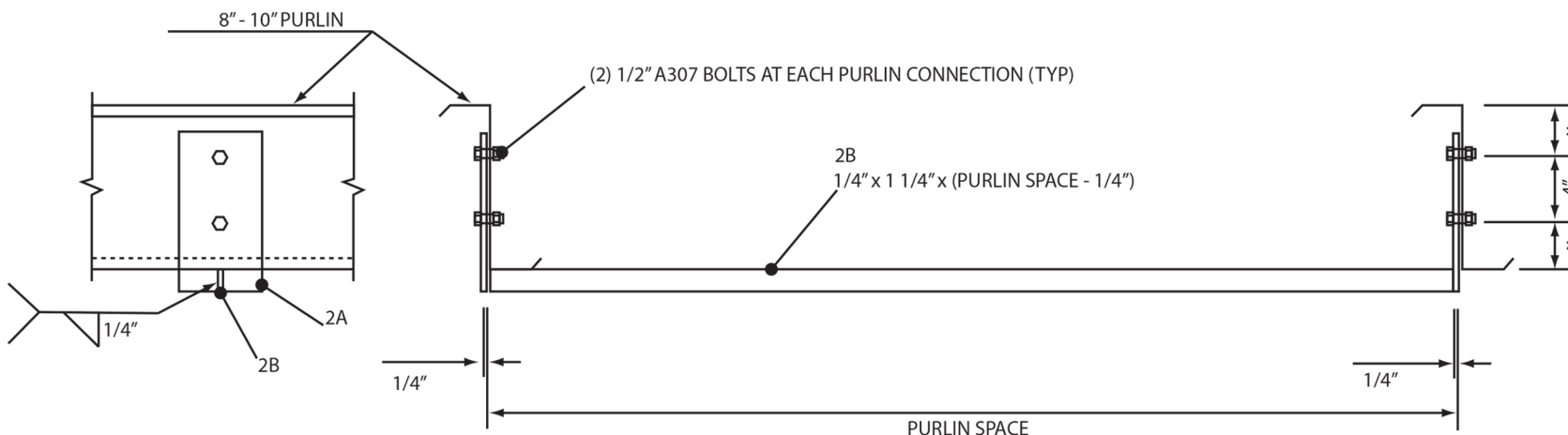
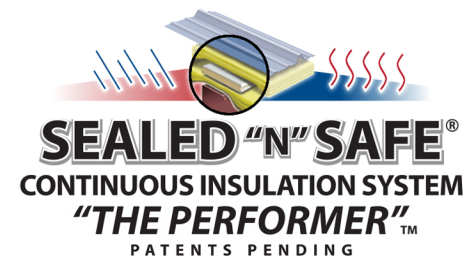
Use otherwise is strictly forbidden



Sealed "N" Safe® Purlin Strut System

OPTION 2 - FIX PURLIN STRUT SYSTEM

BUILD TO FIT PURLIN SPACE

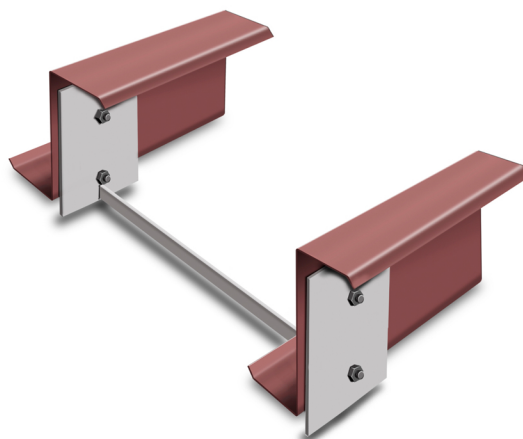


CLIP SIZING CHART

THICK	WIDTH
1/4"	5"
5/16"	3 1/2"
3/8"	2 1/2"

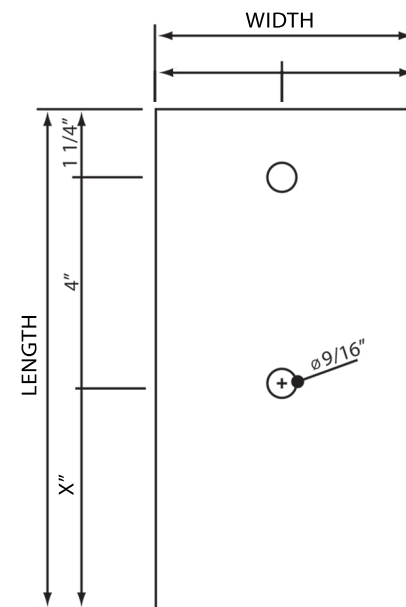
NOTES:

1. ALL MATERIAL IS DESIGNED WITH A36 YIELD MINIMUM.
2. ALL BOLTS ARE TO BE 1/2" A307.
3. INSTALL PURLIN CLIP TO PURLIN
4. INSURE THAT 2B IS STRAIGHT BEFORE, DURING, AND AFTER INSTALLATION.



LENGTH CHART

PURLIN SIZE	LENGTH
8"	8 5/8"
9"	9 5/8"
10"	10 5/8"



2A CLIP LAYOUT

This Drawing is
Property of Sealed "N" Safe® Products LLC
 Patent Pending

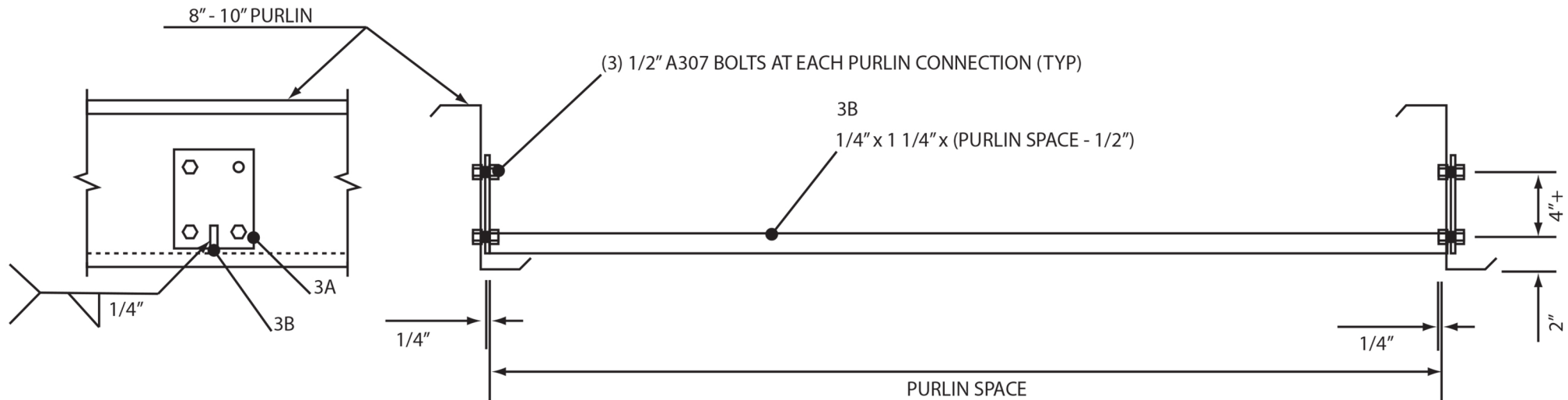
Use of this information is granted for use at no charge only with the
Sealed "N" Safe® Continuous Insulation System
 Which includes use of the SNS® Thermal Spacer
 Use otherwise is strictly forbidden

*The SNS® Purlin Strut System is
 designed to resist Purlin Rotation.
 (Illustration of the Fix Purlin Strut
 System, Patent Pending)*

Sealed "N" Safe® Purlin Strut System

OPTION 3 - CONCEALED FIX PURLIN STRUT SYSTEM

BUILD TO FIT PURLIN SPACE



NOTES:

1. ALL MATERIAL IS DESIGNED WITH A36 YIELD MINIMUM.
2. ALL BOLTS ARE TO BE 1/2" A307.
3. INSTALL PURLIN CLIP TO PURLIN WITH (2) BOLTS IN BOTH BOTTOM HOLES AND (1) BOLT IN TOP HOLES.
4. INSURE THAT 3B IS STRAIGHT BEFORE, DURING, AND AFTER INSTALLATION.

This Drawing is

Property of Sealed "N" Safe® Products LLC

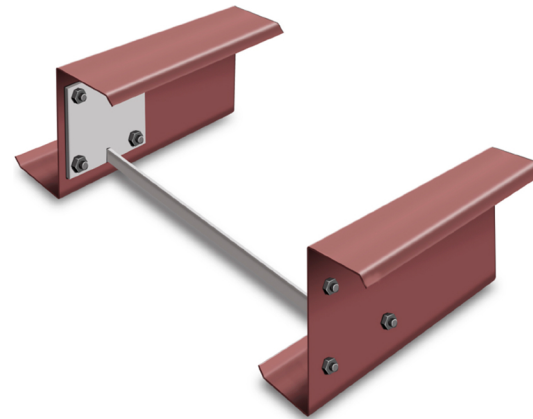
Patent Pending

Use of this information is granted for use at no charge only with the

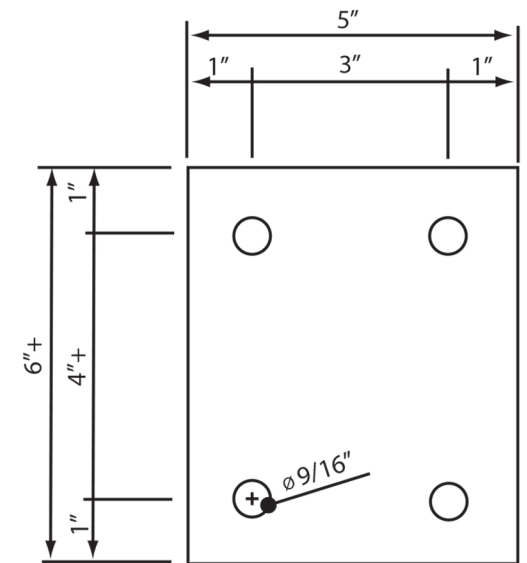
Sealed "N" Safe® Continuous Insulation System

Which includes use of the SNS® Thermal Spacer

Use otherwise is strictly forbidden



*The SNS® Purlin Strut System is designed to resist Purlin Rotation.
(Illustration of the Concealed Fix Purlin Strut System, Patent Pending)*



3A CLIP LAYOUT 1/4" x 5" x 6"