



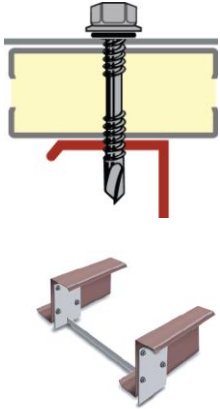
**Proven to Increase  
Insulation Performance  
by as much as Double or More!**

An Energy Star friendly product



## The "Screwdown Solution"

We offer 3 products to help you achieve today's requirements for Energy Efficiency in Metal Buildings.

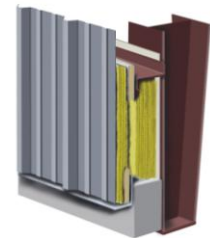
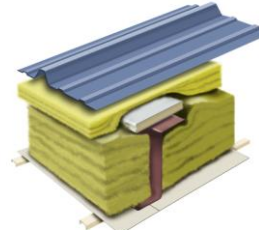


1. Our **Patented Thermal Spacer** is designed specifically to overcome the structural and fastener issues created when installing a Thermal Spacer between the roof purlins and "Screwdown Roof Panel" or wall girts and "Screw-down Wall Panel". Simply add the SNS Thermal Spacer to the MBI Blanket and achieve **"double the performance or more"**.
2. Our **Patented Purlin Stabilizer** eliminates cross bridging between roof purlins, thus allowing **"Hot Box Perfect" installation in the field every time, all the time**. Cross bridging will have a negative impact on the U-Value on any Fiberglass MBI System.
3. Our **Insulation Support Rail** can be installed by one person, right behind the framing crew. After that, all the insulation is installed from on top.

### SNS Tested U-Values that meet today's U-Value requirements

Walls: 4" over the frame with 4" backfill  
**U-Value 0.048** (8" girt)

Roof: 4" over the frame with 6" backfill  
**U-Value 0.041** (8" purlin)  
4" over the frame with 8" backfill  
**U-Value 0.036** (10" purlins)



SNS U-Value Comparison Chart to see our full line from a single layer (R-10) to our Suspended System (R-63). The SNS Thermal Spacer is for use with any Fiberglass MBI System that requires a Thermal Spacer. Can be installed by one man, reducing installation time by as much as 15%

SNS is designed for use with roof and wall panels including architectural panels, standing seam roof systems, and even screw-down roof and wall systems.

### SNS Provides a great Return on Investments

SNS costs about the same as 3" insulation blanket with a return on investment between 7 to 18 months depending upon zones, roof and insulation applications.

### Millions of SF./FT. Installed & Counting!!

Let Us Help You Solve Your Energy Code Issues

Help Hotline:  
**888-340-4767**  
or visit us online at:  
[www.SealedNSafe.com](http://www.SealedNSafe.com)

Scan this barcode with a scan app on your mobile device to view a short 2-4 minute video.

