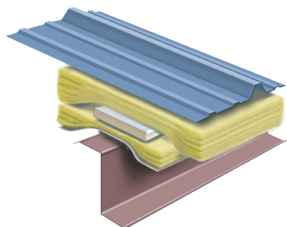




Thermal Spacer

Our SNS® Thermal Spacer "The Performer" can be installed on the go (option 1) as insulation and roof sheets are installed or they can be installed all at once (option 2) with a man basket, either way, works great.

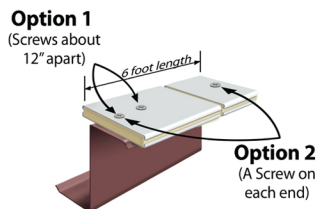


Each thermal spacer comes in six-foot lengths which are the standard widths of two roof sheet panels and the typical width of a metal building insulation roll, making the thermal spacer easy to handle and install.

Each thermal spacer comes with two flat-head screws to hold the six-foot thermal spacer in place. (210 flat screws will be provided for 100 thermal spacers).

Suggestions:

- When installing the thermal spacer, center it over the flange of the purlin
- Butt the thermal spacers end to end without added pressure
- Consider the placement of the flat-head screws through the thermal spacer, so that the SNS® panel fasteners do not conflict with the flathead screws
- When installing the insulation blankets, install to industry standards to allow for full expansion of fiberglass

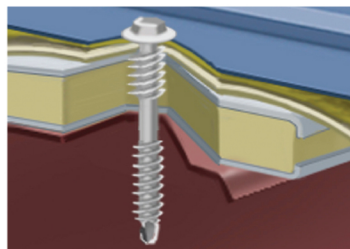


Step 1: Install SNS® Purlin Struts between purlins if needed. (See instructional guidelines for more information)

Step 2: Thermal Spacers are placed over the tops of the purlins and are attached by two flat head screws. (Option 1) screw the first flathead screw at the end and the second screw around 12 inches from the first. (Option 2) screw the flathead screw at each ends.

Fasteners:

Our SNS® Panel Fastener has been specifically designed to be used with SNS® Thermal Spacer "The Performer". **Use of this fastener is mandatory as it is key to the performance of the Sealed "N" Safe® Continuous Insulation System.** If pre-drilling the sheeting, use a 1/8 drill bit to maintain the design and the performance of the fastener. Do not use any other fastener. Use of any other fastener will void all warranties.



Suggestions:

- If your roof sheet requires more SNS® Panel fasteners than are provided, additional fasteners are available at SNS
- A 6 amp 2500 rpm electric screw-gun will be needed with a depth locating nosepiece. (See fasteners installation instructions)

Step 3: Once the installation blanket and the roof sheets are placed over the Thermal Spacers. SNS® Panel Fasteners are placed through the roof sheet, insulation, and thermal Spacers into the purlin below. The design of the panel fastener creates a "stitch-type" joint, between the roof sheet and the thermal Spacers, creating a water-tight seal, while fastening the whole assembly tightly to the purlin. If pre-drilling the roof sheet, use a 1/8" drill bit.

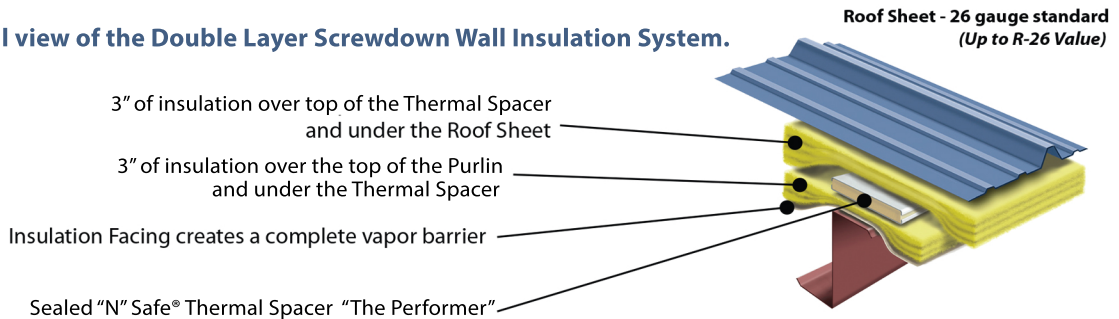
The fastening process works much like a typical screw-down roof. The only additional step is to set the thermal Spacers, in place with two flat head-screws and the use of the SNS® Panel Fastener to screw down the roof sheeting.



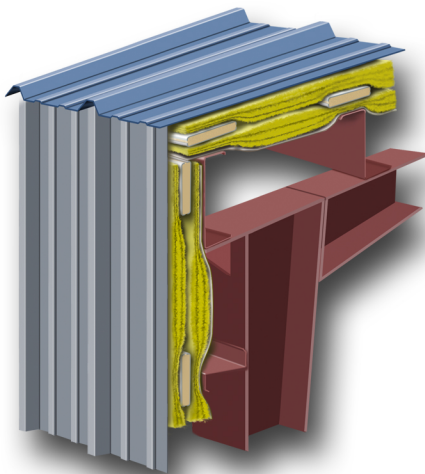
SEALED "N" SAFE®
scan QR code for an instructional video

The only difference between the double layer and the single layer system, is the additional insulation between the girt and the Thermal Spacer. When attaching the Thermal Spacer to the girt, be sure to apply pressure to the Thermal Spacer so that the Thermal Spacer is snug-tight to the girt using the falt-head screws. Do not compress or dimple the Thermal Spacer.

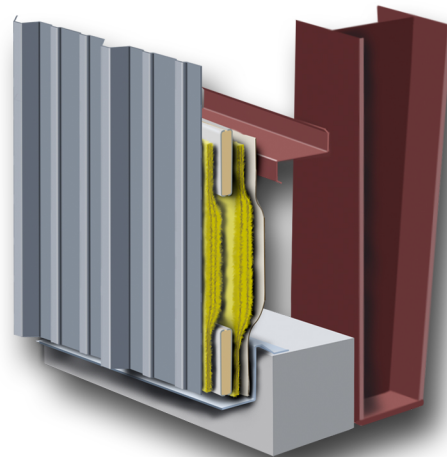
Cross-sectional view of the Double Layer Screwdown Wall Insulation System.



Double Layer Roof & Wall Insulation System (Patents Pending)



Double Layer Wall Insulation System (Patents Pending)



For **Step 1 and 2** of the double layer system, refer to the single layer system, on the other side of this page, and do steps 1 and 2. (When installing the Insulation Blankets, offset the upper and lower insulation side joints from each other to increase efficiency)



call today:
888-340-4767

www.sealednsafe.com